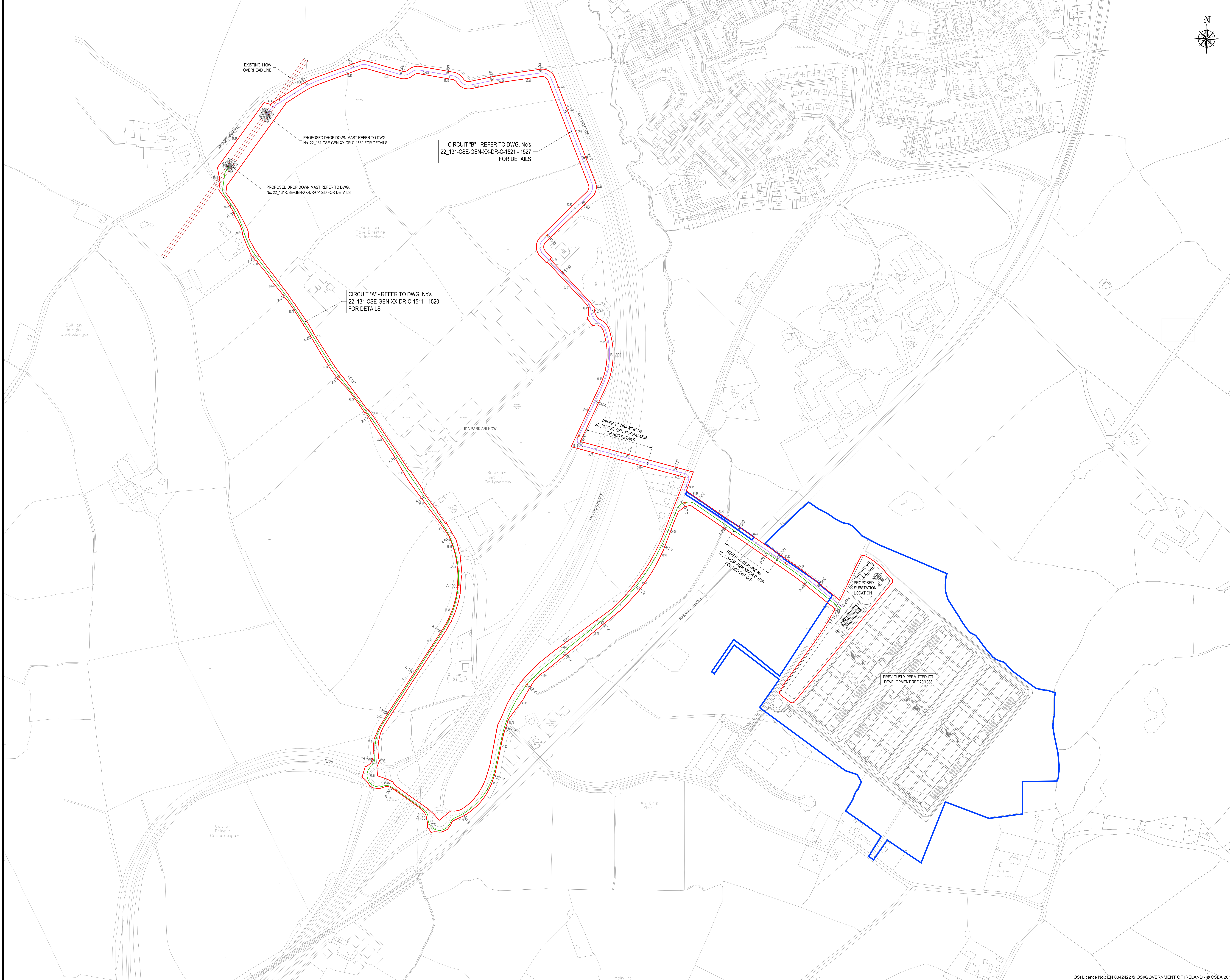


- LEGEND:**
- PROPOSED CIRCUIT 'A' ROUTE —
 - PROPOSED CIRCUIT 'B' ROUTE —
 - PROPOSED JOINT BAY
 - EXISTING 110KV OVERHEAD LINE / MAST
 - EXISTING GROUND SPOT LEVEL —
 - PROPOSED SITE BOUNDARY —
 - APPLICANT OWNERSHIP BOUNDARY —



P02	GENERAL AMENDMENTS	KT	DRL	25/10/22
P01	ISSUE FOR PLANNING	KT	DRL	21/10/22
Rev	Description	Drawn	Checked	Date

Clifton Scannell Emerson Associates Limited
 Consulting Engineers
 3rd Floor The Heights,
 Bakes Point, Priory Road,
 Sunningdale, Co. Wick,
 Ireland. A66 9279
 T: +353 1 938 8100
 F: +353 1 283 3466
 E: info@cses.ie
 W: www.cses.ie

Client	CRAG WICKLOW LIMITED		
Project	DUB 30 GRID CONNECTION PROPOSED GRID CONNECTION OVERALL		
Drawn By	KT	Date	SEP. 2022
Checked By	DRL	Scale	1:2500 @ A0
Project Code	22_131 - CSE - GEN - XX - DR - C - 1510	Zone/Phase	CSEA Job No.

S2	SUITABLE FOR INFORMATION
P02	PLANNING
Revision	Project Status